

Advanced Engineering Capabilities

- Choice of Shear wall, bearing wall
- Develops interaction curves
- Customized reinforcement & Strand
- Optional closed Tie Bars, WWR
- Time dependent (PCI) method of prestress loss calculation
- Provision for type of pre-stressing tendons
- Considers Bi-Axial Bending



Loading Options

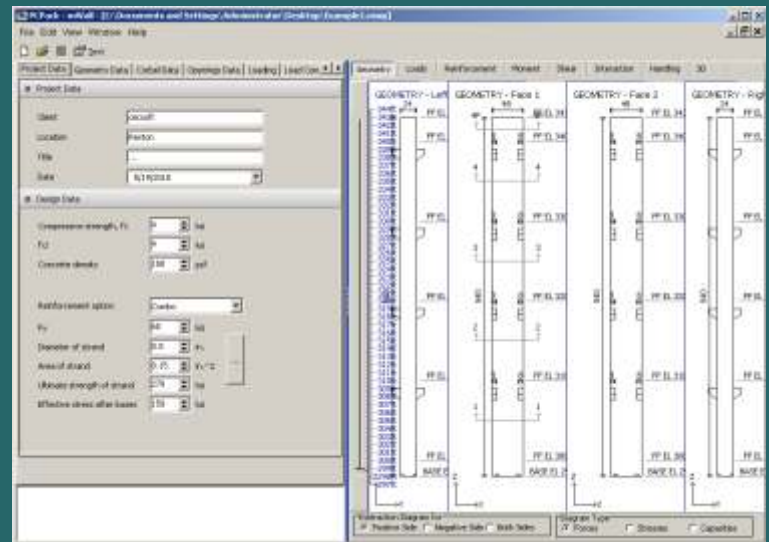
- Dead loads
- Live loads
- Snow loads
- Load combinations

Reinforcement Options

- Reinforcing bars
- Strands
- Combination of strands & reinforcing bars

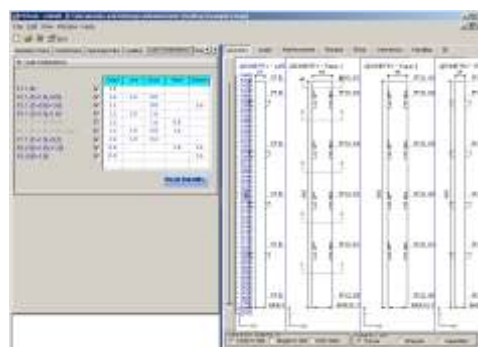
Design Codes

- ACI 318-08
- PCI Design Handbook 7th Edition



Member Geometry

- Rectangular Wall panel
- Corbels on all floors
- Rectangular and circular openings



User Friendly Features

- On-screen user manual and context sensitive help
- User friendly graphical interface
- User defined graphical cross section editor
- Alert for incorrect inputs
- Saves the latest design inputs as default
- Comprehensive summary reports
- Analysis result plot diagrams in terms of graphical output
- Export data to spreadsheet or MSWord