

Advanced Engineering Capabilities

- Concrete Anchor
- Connections (Angle, Corbel, Haunch etc)
- Beams (Rectangular, IT, L shape)
- Slabs (Hollow Core, Solid, DT)
- Columns (Rectangular, Slender)
- Walls (Solid, Sandwich, Shear wall)
- Foundations (Piles, Isolated, Strip)

Loading Options

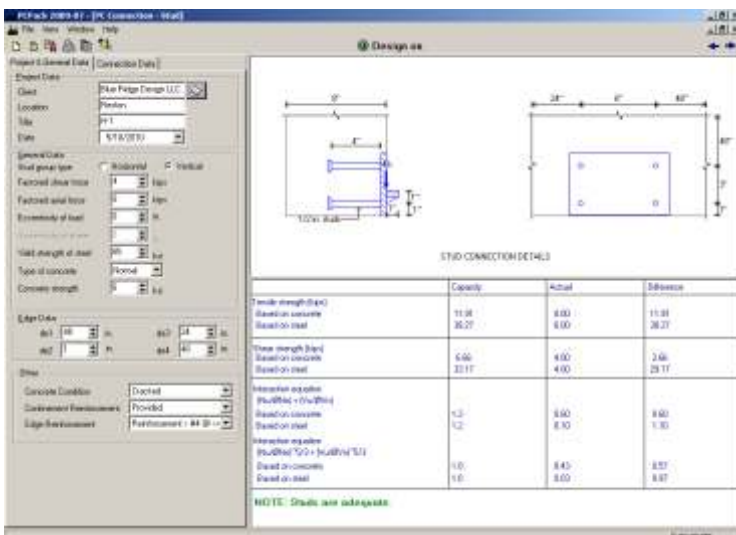
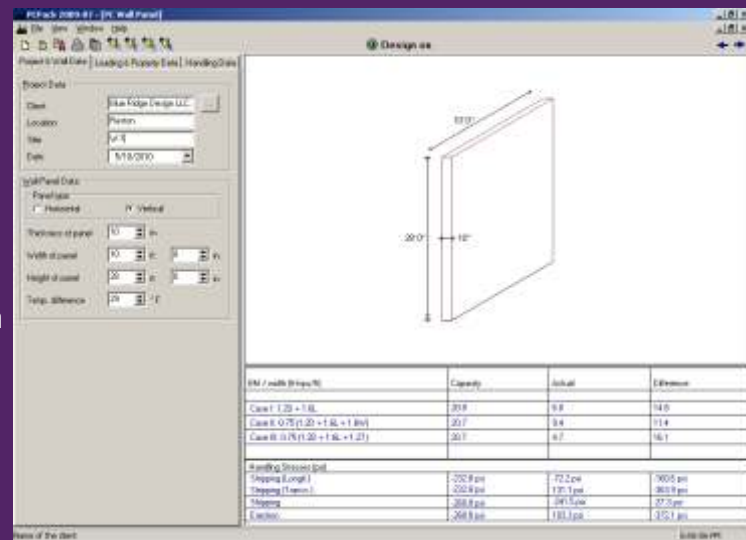
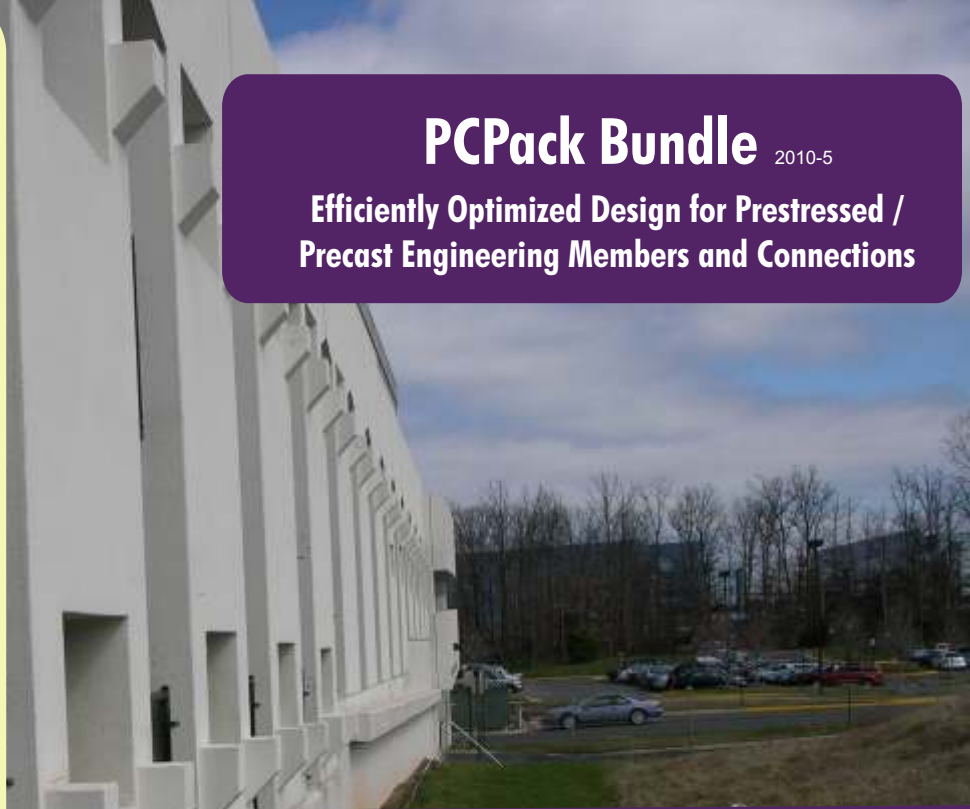
- Axial loads
- Wind loads
- Bending Moments

Design Codes

- ACI 318-08
- PCI Design Handbook 7th Edition

Reinforcement Options

- Strands
- Rebars
- Combinations of strands and Rebars



User Friendly Features

- On-screen user manual and context
- Design tutorials and examples
- User friendly graphical interface
- User defined graphical cross section editor
- Alert for incorrect inputs
- Saves the latest design inputs as default
- Comprehensive summary reports
- Analysis result plot diagrams in terms of graphical output
- Export data to spreadsheet or MSWord